

Paper



For more information on paper call the Waste Watch Wasteline on 0870 243 0136 or visit our website www.wastewatch.org.uk



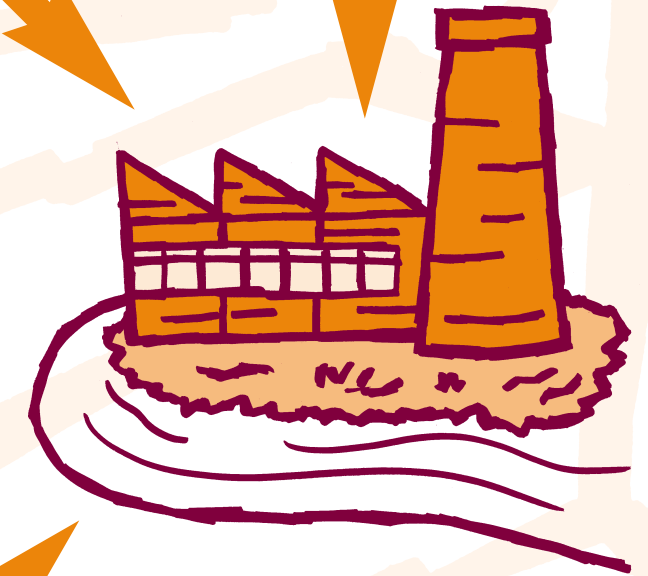
Trees are cut down and the branches removed. The bark is then taken off.

About 15 trees are used to make 1 tonne of paper

Debarked logs are reduced to pulp by grind wheels sprayed with water.

Turning wood into pulp is hard work and uses lots of energy and water. It takes 6 Kwh and 300 litres of water to make 1 kg of paper.

energy



We use over 12 million tonnes of paper and board each year in our homes and offices.

We throw away about 5 million tonnes of paper and board each year

Each home throws away 2kg of newspapers and magazines each week which could be recycled.

Making paper from recycled paper and board uses less energy and water.

Many paper products are made from recycled paper – look out for these.



Nearly 65% of paper and board made in the UK contains recycled fibre.

The average school throws away about 100 kg of paper each term.

